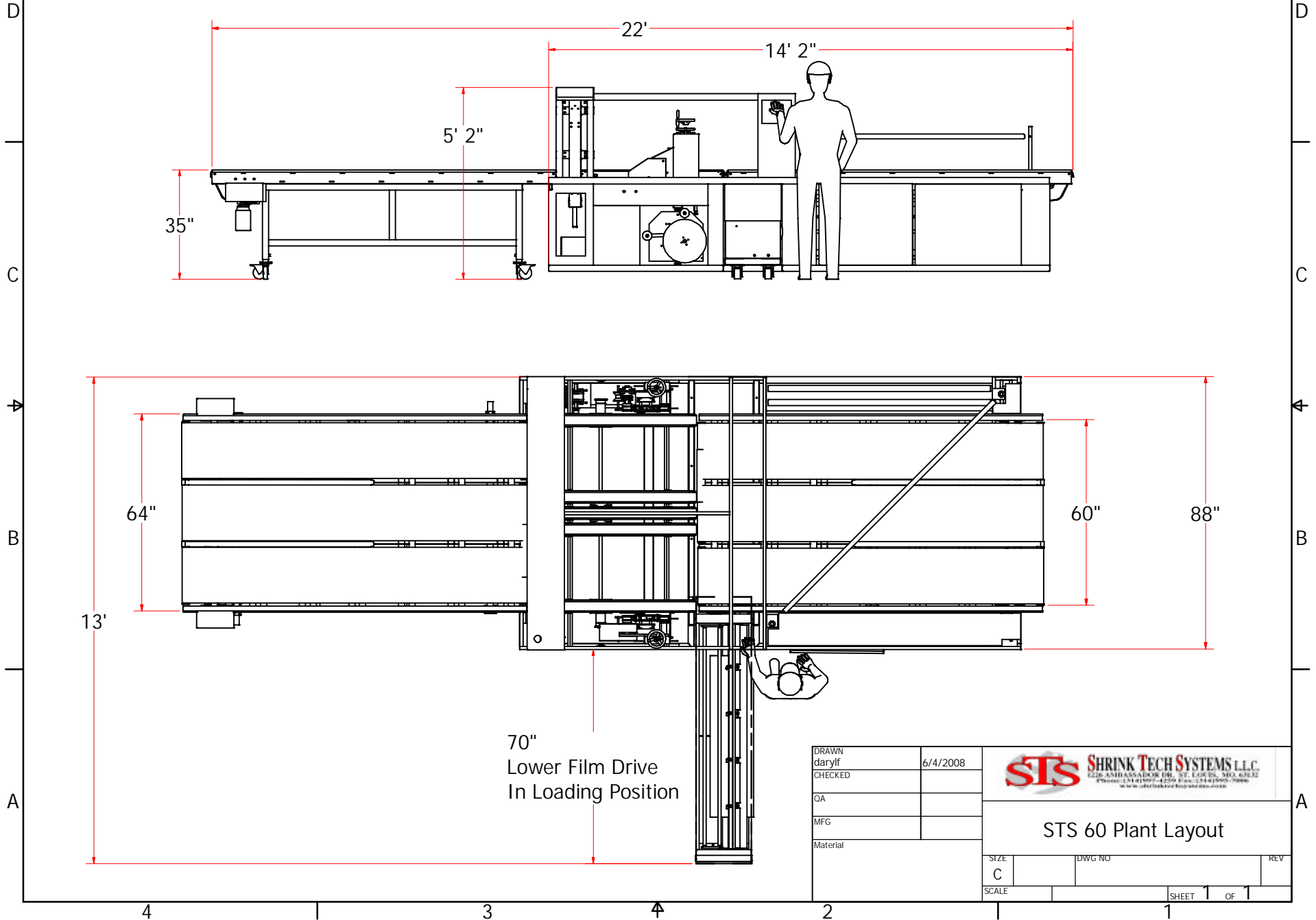


Shrink Tech Systems L.L.C. proprietary rights are included in the information disclosed herein. Recipients by accepting this document agrees that neither this document nor the information disclosed herein nor any part thereof shall be reproduced or transferred to other documents or used or disclosed to others for manufacturing or for any other purpose except as specifically authorized in writing by Shrink Tech Systems L.L.C.

Electric : 230 volt 1 ph 20 amps
Air: 90 psi @ 1 cfm



DRAWN	darylf	6/4/2008
CHECKED		
QA		
MFG		
Material		



STS 60 Plant Layout

SIZE	C	DWG NO		REV	
SCALE		SHEET 1 OF 1			